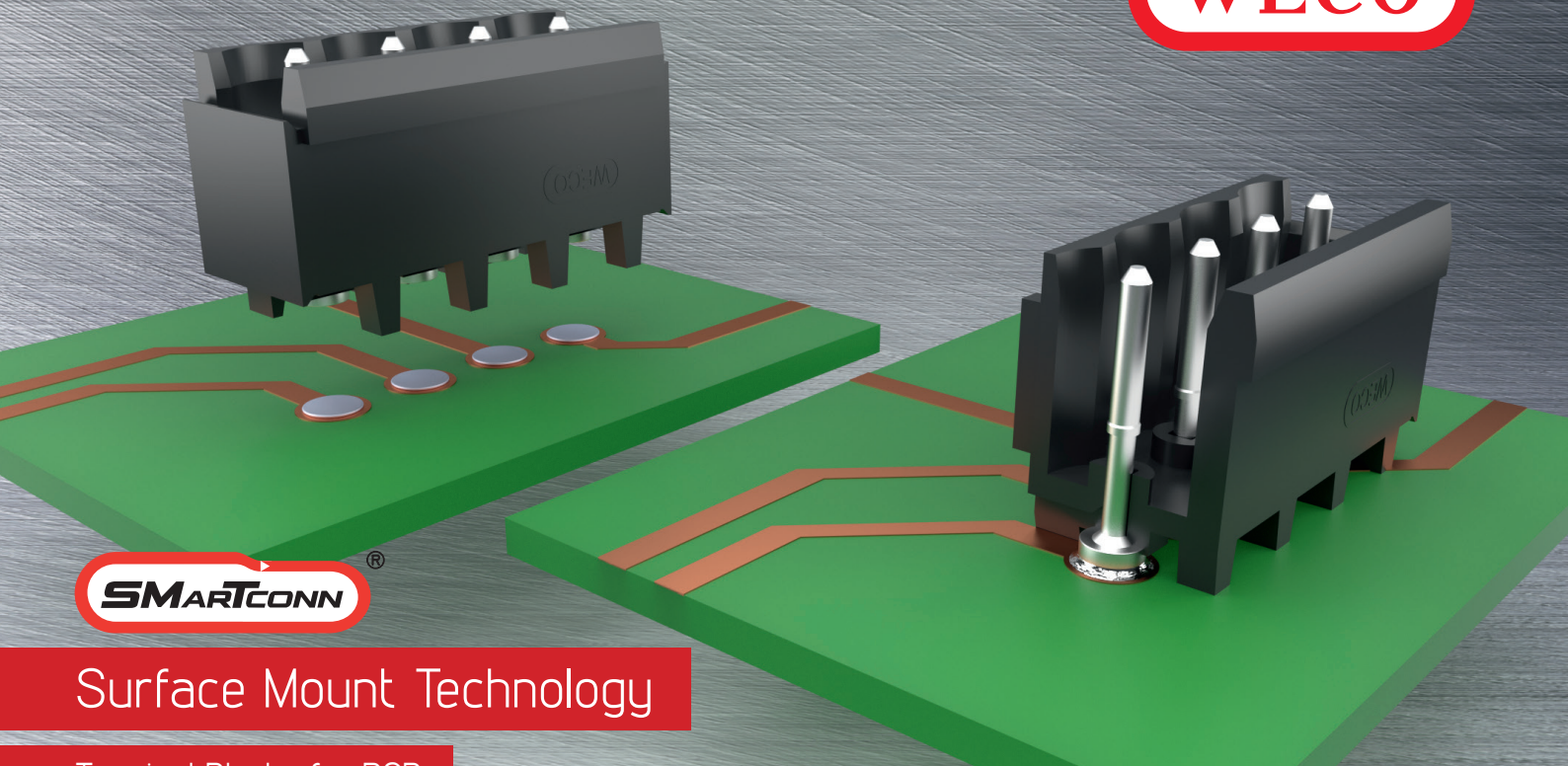


WECO®



SMarTCONN®

Surface Mount Technology

Terminal Blocks for PCB

Experience the other side

WECO has developed the **SMarTconn®** line of surface mounted technology (SMT) power terminal blocks capable of handling power from 8 A up to 17.5 A and available in 2 to 12 poles, enough to power complex IoT control boards required in large automated factories.

SMarTconn® terminal blocks address the general trend toward smaller components, which is evident in industrial automation. Since the advent of “Internet of Things” (IoT) and Industry 4.0, the requirement for space-saving solutions is essential. In addition to high performance, the need to maximize PCB real estate as well as the need to supply power at higher current is also of paramount importance.

This is where WECO **SMarTconn®** plays an important role.

KEY FEATURES



UL and CSA certified products



Designed for the most adverse conditions: UV-resistant, corrosion- and ageing-resistant, insulation-optimised, safe even in severe environmental conditions



Extremely resilient against tensile and compression forces



Stability and coplanarity using unique Single Component Technology (SCT)



Products in Tape-on-Reel for automated assembly lines



Increase real estate and save space on PCB board



Looking for the right product? We can help you with our over 100 years of experience and can come up with a tailored-made solution especially for you!

ADAPTABILITY.
RELIABILITY.
PERFORMANCE.



Our Key Performance Indicators

Proud of our operational excellence and solid performance, we have set KPI's to represent what our customers value the most.



Zero-Failure-Principle
Plug & Play



Quality
High Quality products



Compliance
with international standards



Response
Quick replies, answers, solutions, quotes, ...



Agility
Agility in production



Delivery
On Time Delivery



TCO
Live Total Cost of Ownership

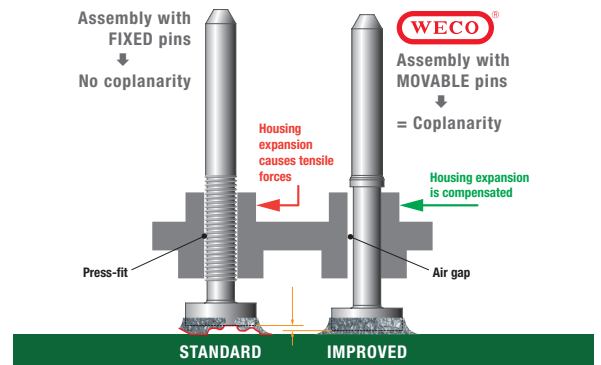
SMarTconn® – Connectors Engineered for SMT Assembly Processes

Larger power connectors of more than 2.54 mm pitch are subjected to greater mechanical stress than other smaller passive or active electronic components. During the assembly process, enormous forces are generated, whether by connecting electrical conductors or applying a corresponding connector strip.

WECO studied the issue and designed a line of unique patented technology called **SMarTconn®**.

This series of terminal blocks are designed with floating elements. Each contact is independent and able to "float" within the terminal body, ensuring coplanarity with the PCB surface.

The principle of a floating contact allows proper alignment to the PCB as the capillary action of the solder paste aligns each contact independently thus eliminating the CTE (coefficient of thermal expansion) mismatch during the reflow process.



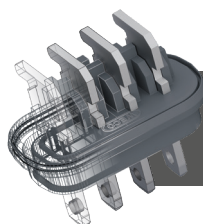
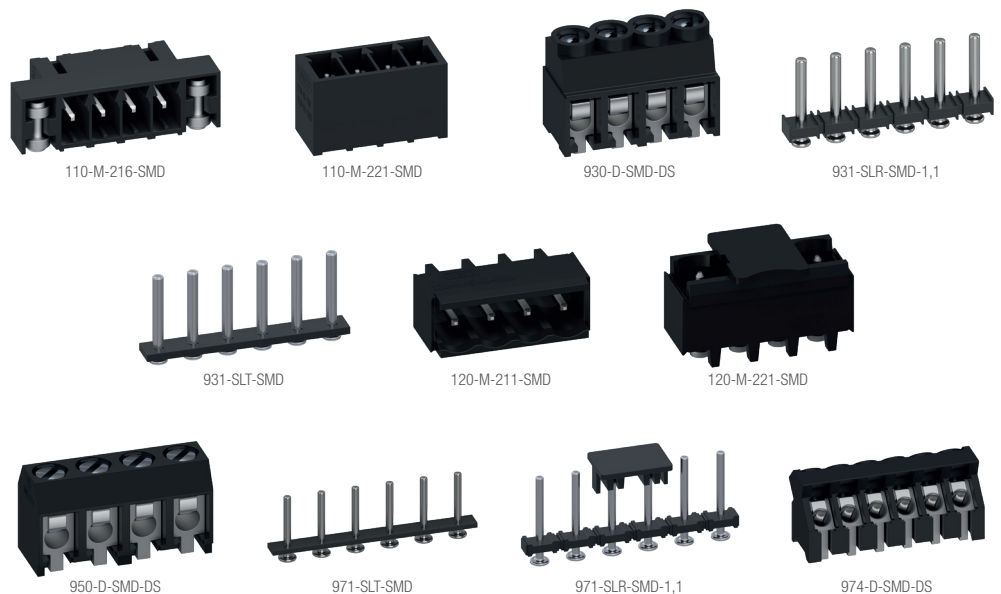
ADVANTAGES

- Optimal Total Cost of Ownership (TCO)
- Overall cost savings
- Increased Real Estate on the PCB
- Reliable
- Eliminate CTE mismatch
- Robust
- Self-alignment of the contact elements through natural cohesion

APPLICATIONS

- IoT & Connectivity
- CNC Machine Control Panel
- Factory Process Control Panel - Power Distribution
- Lighting
- Energy Management
- Smart Homes and Buildings
- Communication Technology
- Automotive electronics

SELECTION OF SMARTCONN® SMD-PRODUCTS



Tailored Solutions

Consider WECO to be your first choice in tailored electrical connection solutions for various applications worldwide.

wecoconnectors.com

© 2022 by WECO.
WECO® is a registered trademark of WECO Electrical Connectors Inc.
Information provided in this document may be changed without prior notice.
"SMarTconn" | 93 955 102 | EN | R3.07.2022

